The background of the cover features a glass containing several sticks, possibly representing a scientific experiment or a natural phenomenon. A bright yellow circle is positioned in the upper left quadrant. A semi-transparent grey horizontal band is overlaid across the middle of the image, containing the journal's title and publication information.

International Journal of Physical Sciences

Volume 11 Number 3 16 February 2016

ISSN 1992-1950



*Academic
Journals*

ABOUT IJPS

The **International Journal of Physical Sciences (IJPS)** is published weekly (one volume per year) by Academic Journals.

International Journal of Physical Sciences (IJPS) is an open access journal that publishes high-quality solicited and unsolicited articles, in English, in all Physics and chemistry including artificial intelligence, neural processing, nuclear and particle physics, geophysics, physics in medicine and biology, plasma physics, semiconductor science and technology, wireless and optical communications, materials science, energy and fuels, environmental science and technology, combinatorial chemistry, natural products, molecular therapeutics, geochemistry, cement and concrete research, metallurgy, crystallography and computer-aided materials design. All articles published in IJPS are peer-reviewed.

Contact Us

Editorial Office: ijps@academicjournals.org

Help Desk: helpdesk@academicjournals.org

Website: <http://www.academicjournals.org/journal/IJPS>

Submit manuscript online <http://ms.academicjournals.me/>

Editors

Prof. Sanjay Misra

*Department of Computer Engineering, School of Information and Communication Technology
Federal University of Technology, Minna,
Nigeria.*

Prof. Songjun Li

*School of Materials Science and Engineering,
Jiangsu University,
Zhenjiang,
China*

Dr. G. Suresh Kumar

*Senior Scientist and Head Biophysical Chemistry
Division Indian Institute of Chemical Biology
(IICB)(CSIR, Govt. of India),
Kolkata 700 032,
INDIA.*

Dr. Remi Adewumi Oluyinka

*Senior Lecturer,
School of Computer Science
Westville Campus
University of KwaZulu-Natal
Private Bag X54001
Durban 4000
South Africa.*

Prof. Hyo Choi

*Graduate School
Gangneung-Wonju National University
Gangneung,
Gangwondo 210-702, Korea*

Prof. Kui Yu Zhang

*Laboratoire de Microscopies et d'Etude de
Nanostructures (LMEN)
Département de Physique, Université de Reims,
B.P. 1039. 51687,
Reims cedex,
France.*

Prof. R. Vittal

*Research Professor,
Department of Chemistry and Molecular
Engineering
Korea University, Seoul 136-701,
Korea.*

Prof Mohamed Bououdina

*Director of the Nanotechnology Centre
University of Bahrain
PO Box 32038,
Kingdom of Bahrain*

Prof. Geoffrey Mitchell

*School of Mathematics,
Meteorology and Physics
Centre for Advanced Microscopy
University of Reading Whiteknights,
Reading RG6 6AF
United Kingdom.*

Prof. Xiao-Li Yang

*School of Civil Engineering,
Central South University,
Hunan 410075,
China*

Dr. Sushil Kumar

*Geophysics Group,
Wadia Institute of Himalayan Geology,
P.B. No. 74 Dehra Dun - 248001(UC)
India.*

Prof. Suleyman KORKUT

*Duzce University
Faculty of Forestry
Department of Forest Industrial Engineering
Beciyorukler Campus 81620
Duzce-Turkey*

Prof. Nazmul Islam

*Department of Basic Sciences &
Humanities/Chemistry,
Techno Global-Balurghat, Mangalpur, Near District
Jail P.O: Beltalpark, P.S: Balurghat, Dist.: South
Dinajpur,
Pin: 733103,India.*

Prof. Dr. Ismail Musirin

*Centre for Electrical Power Engineering Studies
(CEPES), Faculty of Electrical Engineering, Universiti
Teknologi Mara,
40450 Shah Alam,
Selangor, Malaysia*

Prof. Mohamed A. Amr

*Nuclear Physic Department, Atomic Energy Authority
Cairo 13759,
Egypt.*

Dr. Armin Shams

*Artificial Intelligence Group,
Computer Science Department,
The University of Manchester.*

Editorial Board

Prof. Salah M. El-Sayed

*Mathematics. Department of Scientific Computing,
Faculty of Computers and Informatics,
Benha University. Benha ,
Egypt.*

Dr. Rowdra Ghatak

*Associate Professor
Electronics and Communication Engineering Dept.,
National Institute of Technology Durgapur
Durgapur West Bengal*

Prof. Fong-Gong Wu

*College of Planning and Design, National Cheng Kung
University
Taiwan*

Dr. Abha Mishra.

*Senior Research Specialist & Affiliated Faculty.
Thailand*

Dr. Madad Khan

*Head
Department of Mathematics
COMSATS University of Science and Technology
Abbottabad, Pakistan*

Prof. Yuan-Shyi Peter Chiu

*Department of Industrial Engineering & Management
Chaoyang University of Technology
Taichung, Taiwan*

Dr. M. R. Pahlavani,

*Head, Department of Nuclear physics,
Mazandaran University,
Babolsar-Iran*

Dr. Subir Das,

*Department of Applied Mathematics,
Institute of Technology, Banaras Hindu University,
Varanasi*

Dr. Anna Oleksy

*Department of Chemistry
University of Gothenburg
Gothenburg,
Sweden*

Prof. Gin-Rong Liu,

*Center for Space and Remote Sensing Research
National Central University, Chung-Li,
Taiwan 32001*

Prof. Mohammed H. T. Qari

*Department of Structural geology and remote sensing
Faculty of Earth Sciences
King Abdulaziz UniversityJeddah,
Saudi Arabia*

Dr. Jyhwen Wang,

*Department of Engineering Technology and Industrial
Distribution
Department of Mechanical Engineering
Texas A&M University
College Station,*

Prof. N. V. Sastry

*Department of Chemistry
Sardar Patel University
Vallabh Vidyanagar
Gujarat, India*

Dr. Edilson Ferneda

*Graduate Program on Knowledge Management and IT,
Catholic University of Brasilia,
Brazil*

Dr. F. H. Chang

*Department of Leisure, Recreation and Tourism
Management,
Tzu Hui Institute of Technology, Pingtung 926,
Taiwan (R.O.C.)*

Prof. Annapurna P.Patil,

*Department of Computer Science and Engineering,
M.S. Ramaiah Institute of Technology, Bangalore-54,
India.*

Dr. Ricardo Martinho

*Department of Informatics Engineering, School of
Technology and Management, Polytechnic Institute of
Leiria, Rua General Norton de Matos, Apartado 4133, 2411-
901 Leiria,
Portugal.*

Dr Driss Miloud

*University of mascara / Algeria
Laboratory of Sciences and Technology of Water
Faculty of Sciences and the Technology
Department of Science and Technology
Algeria*

Prof. Bidyut Saha,

*Chemistry Department, Burdwan University, WB,
India*

ARTICLES

Empirical model for estimation of global radiation from sunshine duration of Ijebu-Ode	32
F. O. Ogunsanwo, J. O. Adepitan, V. C. Ozebo and J. D. Ayanda	
Analytical model of heavy-particle pollutant transport in estuary	40
M. Mubarak and A. Sulaiman	

Full Length Research Paper

Empirical model for estimation of global radiation from sunshine duration of Ijebu-OdeF. O. Ogunsanwo^{1*}, J. O. Adepitan¹, V. C. Ozebo² and J. D. Ayanda¹¹Department of Physics, Tai Solarin University of Education, Ijagun, Ijebu-Ode, Nigeria.²Department of Physics, University of Lagos, Lagos, Nigeria.

Received 4 October, 2015; Accepted 17 December, 2015

Empirical models to estimate global solar radiation require the development of a set of equations that relate it to other meteorological parameters and from the monthly average daily value of clearness index and relative sunshine spanning of a period of 5 years, the Angstrom- Prescott model was developed for the estimation of global solar radiation of Ijebu-Ode (Lat. $6.81^{\circ}N$. Long. $3.92^{\circ}E$), a tropical region of Southern part of Nigeria. Regression analysis was done based on the season of the year and the results obtained were compared. The predictive efficacy in terms of mean bias error (MBE) and root mean square error (RMSE) of the model are also tested. The developed correlation model is expressed as $H/H_0 = 0.177 + 0.788 \left(S/S_{max} \right)$ with the correlation coefficient of 89.13%. The result obtained therefore seems to point to the fact that the Angstrom – Prescott model is locally dependable and rainy season model was found to be more satisfactory for the study area with MBE of 0.052 and RMSE of 6.240×10^{-7} .

Key words: Clearness index, global solar radiation, model, rainy season.**INTRODUCTION**

Development of solar energy research program must always start with a study of solar radiation data at a site or region of interest. Measurement of solar radiation exists for only relatively few Meteorological stations and a place where it is not directly measured. It can be estimated by using models and empirical equations (Duffie and Beekman, 1994). Global solar radiation has a fundamental importance for life on earth. It is used in various types of calculation such as, the estimation of reference evaporation. However, its measurement is costly and time consuming. For the utilization of solar

energy and balance studies, it is desirable to measure the diffuse global radiation and direct solar radiation (Sodha et al., 1986). Hence, Global solar radiation is the sum of diffuse solar (sky) radiation and direct solar radiation, while Global solar irradiance is the irradiance produce by solar radiation on a horizontal surface on the earth.

The knowledge of daily and hourly record of the amount of sunshine is necessary for estimating global solar radiation using regression equation and for optimising the design of a particular solar collection. In

*Corresponding author. E-mail: godif07@yahoo.com.

order to homogenise the data on the world wide network for sunshine duration, a special design of the Campbell-Stokes sunshine recorder was recommended by World Meteorological organisation (WMO, 1962). The solar constant (I_{sc}), is the irradiance produced by the extra-terrestrial solar radiation on the surface perpendicular to the sun's ray to the mean yearly sun-earth distance (150million km). According to the World Radiation Centre (WRC), the most acceptable value of solar constant is $1367W/m^2$. Hence the direct correlation between global solar radiation and sunshine duration for a particular station is the regression equation between the solar global radiation and the temperature observed. In this study, the determination of correlation between the sunshine duration and global solar radiation is described by (1) called ANGSTROM FORMULA.

METHODOLOGY

The data sets for Ijebu-Ode used in this study include monthly daily observed solar radiation (Gunn-Bellani distillate) and monthly average of sunshine duration in hours for a period of five years. The data for Ijebu-Ode were obtained from the archives of Nigeria meteorological Agency, Oshodi, Lagos State. The geographical location of Ijebu- Ode is on latitude $6.81^{\circ}N$ and longitude $3.92^{\circ}E$.

ANGSTROM FORMULA was used to investigate the correlation between the sunshine duration and global solar radiation as described by equation 1.

$$H/H_0 = a + b(S/S_{max}) \quad (1)$$

By re-writing (1), we have

$$K_T = a + bS \quad (2)$$

Where $K_T = H/H_0$, is called the clearness index and is defined as the ratio of global horizontal irradiance to the extra- terrestrial horizontal irradiance. Extra- terrestrial solar radiation is the solar radiation incident on the outer limit of the earth's surface.

$S = S/S_{max}$, is the corresponding sunshine duration.

a and b are regression constants which have to be determined monthly.

The monthly global solar radiations which were obtained using Gunn-Bellani distillate were converted and standardized after Folyan (1988) expressed as,

$$H = (1.357 \pm 0.176)H_{GB}MJm^{-2} \quad (3)$$

H is the global solar radiation in MJm^{-2} and H_{GB} is the raw data obtained using Gun-Bellani distillate.

*Gunn-Bellani distillate is the raw solar radiation data observed directly by the Nigeria meteorological agency.

EXTRA-TERRESTRIAL SOLAR RADIATION (H_0)

Extra-terrestrial solar radiation (H_0) is the radiation that is incidence on the terrestrial surface. It is known as the top of atmospheric irradiance. H_0 could be computed using equation 4 below:

$$H_0 = \frac{24 \times 3600}{\pi} G_{sc} \left[1 + 0.33 \cos\left(\frac{360n}{365}\right) \right] \left[\cos\theta \cos\delta \sin\omega_s + \frac{2\pi}{360} \omega_s \sin\theta \sin\delta \right] \quad (4)$$

H_0 = monthly mean daily extra terrestrial radiation MJm^{-2}

G_{sc} = global solar constant

ω_s = sunset hour angle for the typical day n of each month

θ = latitude angle for the location in degree.

δ = declination angle for month in degree

n = is the Julian day number of the year from January 1 to December 31.

The sunset hour angle ω_s is given as:

$$\omega_s = \cos^{-1}(-\tan\theta \tan\delta) \quad (5)$$

The declination angle δ is given as

$$\delta = 23.45 \sin\left[\frac{360(284 + n)}{365}\right] \quad (6)$$

(Rao et al., 1984; Reitveld, 1983).

Maximum hours of insolation (S_{max}) which is the maximum possible duration of sunshine is given as:

$$S_{max} = \frac{2}{15} \cos^{-1}(-\tan\theta \tan\delta) \quad (7)$$

CORRELATING CLEARNESS INDEX AND RELATIVE SUNSHINE DURATION

The Angstrom-type regression model equation has been used to estimate for the global solar radiation for various stations in Nigeria. The equation is proposed by Angstrom (1924) which was later modified by Page (1964).

$$H/H_0 = a + b(S/S_{max}) \quad (8)$$

S/S_{max} is the relative sunshine duration, S is the hours of bright sunshine, a and b are regression constants which are dependent on latitude and other meteorological parameter.

STATISTICAL ANALYSIS

The validity of the model was tested using the statistical tools proposed by Stone (1993) which are analysed into two namely; the

Table 1. The computed value of the extra-terrestrial solar radiation MJm^{-2} .

Month	Julian day(n)	δ (degree)	ω_s (degree)	H_0 (MJm^{-2})
January	31	-17.782271	87.8049920	42.932443
February	59	-8.670041	88.95659206	42.090936
March	90	3.618542	90.43270512	37.960582
April	120	14.586996	91.7809013	32.022950
May	151	21.898483	92.75141398	26.744626
June	181	23.1814489	92.93167904	24.872968
July	212	18.171031	92.24636014	26.813257
August	243	8.104609	90.97440498	31.624915
September	273	-3.817824	89.54339542	36.626409
October	304	-15.056183	88.15911484	39.867852
November	334	-21.969868	87.23866739	47.663520
December	365	-23.085911	87.08226034	49.145587

Table 2. Computed values of relative sunshine duration and clearness index.

Month	S (h)	S_{max} (h/month)	S/S_{max}	$K_T = H/H_0$
January	5.275	11.707332	0.4505	0.34832
February	6.875	11.860878	0.5796	0.42105
March	5.800	12.057694	0.4810	0.45256
April	5.860	12.23745	0.4789	0.51444
May	5.680	12.366855	0.4593	0.57843
June	4.340	12.390891	0.3503	0.50411
July	2.580	12.299515	0.298	0.37349
August	2.120	12.129921	0.1748	0.31152
September	3.467	11.939119	0.2904	0.32826
October	5.000	11.754549	0.4254	0.37032
November	6.257	11.638223	0.5395	0.36442
December	5.800	11.610968	0.4995	0.3125

mean bias error (MBE) and Root mean square error (RMSE). The mean bias error and Root mean square error were evaluated using the following equations for the station.

$$RMSE = \left[\frac{\sum (H_{cal} - H_{obs})^2}{N} \right]^{1/2} \quad (9)$$

$$MBE = \frac{\sum (H_{cal} - H_{obs})}{N} \quad (10)$$

H_{cal} is the calculated value from the model

H_{obs} is the observed value

N is the total number of observation

RESULT AND DISCUSSION

The value of solar global radiation measured on the ground surface depends on the clarity or transparency of the atmosphere to the incident radiation; hence the value of the ratio of H/H_0 will depend on the clearness of the atmosphere (Babatunde, 2005).

The value of extra-terrestrial solar radiation $H_0(MJm^{-2})$ and relative sunshine duration were computed as given by Duffie and Beckman (1994) and Sodha et al., (986) using equation 4 and 8 (Tables 1 and 2).

From Table 1, the highest extra-terrestrial solar radiation H_0 occurs in the month of December (49.145587MJm⁻²) which is of dry season while the least occur in month of June (24.872968 MJm⁻²) which is rainy season (Figures 1 to 7).

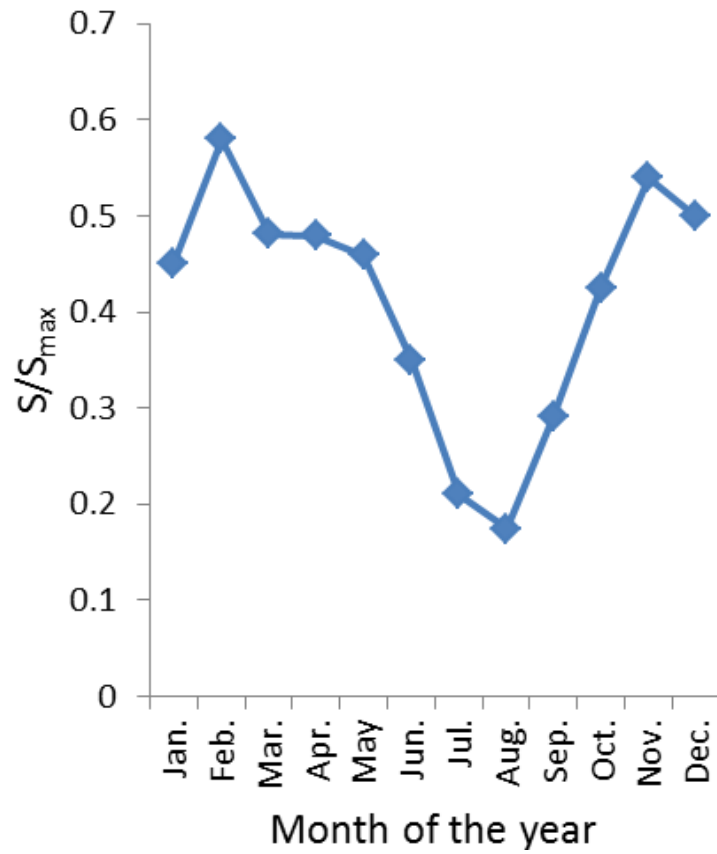


Figure 1. Variation of S/S_{max} over the year.

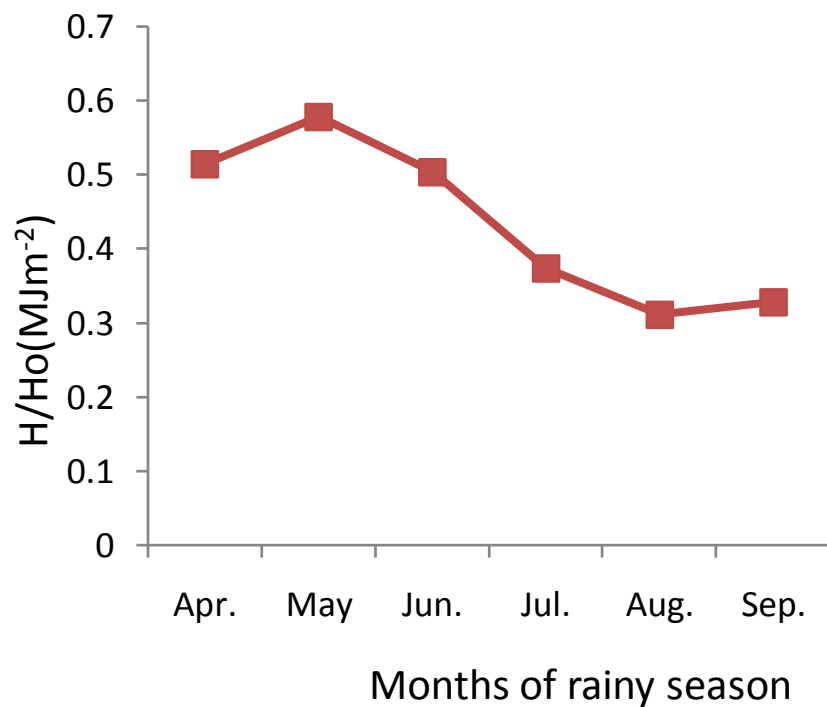


Figure 2. Variation of H/H_o over the year.

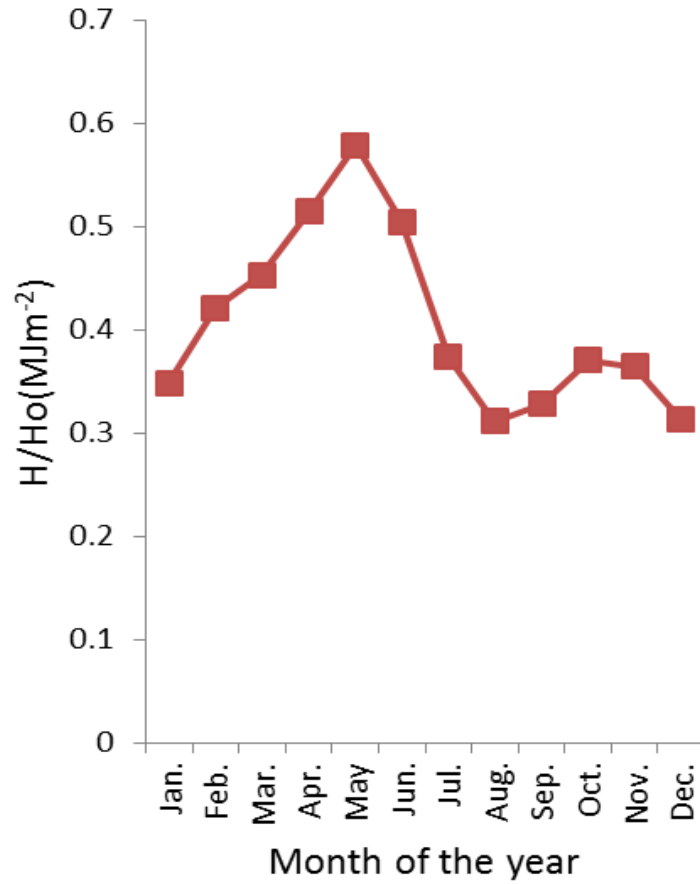


Figure 3. Variation of H/H₀ in the rainy season.

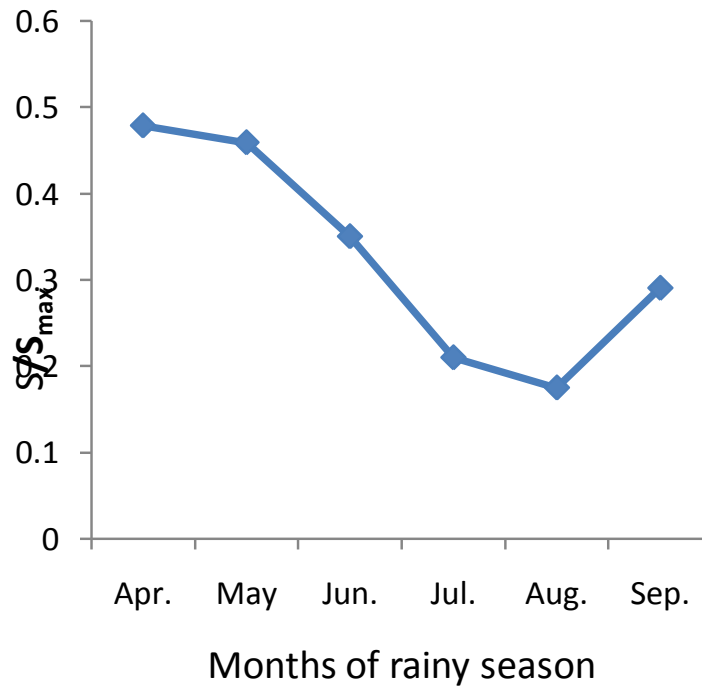


Figure 4. Variation of S/S_{max} in the rainy season.

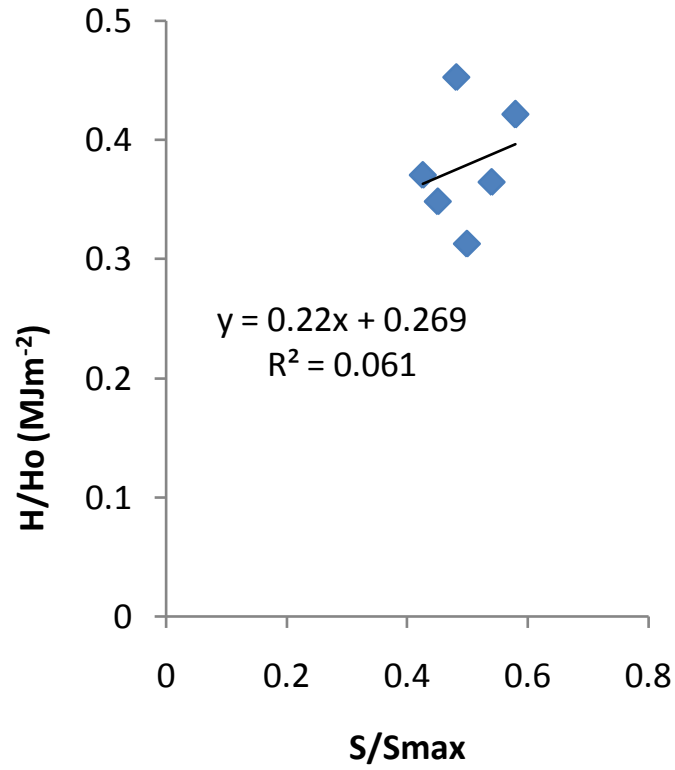


Figure 5. Graph of H/H_0 versus S/S_{max} for the dry season (October – March).

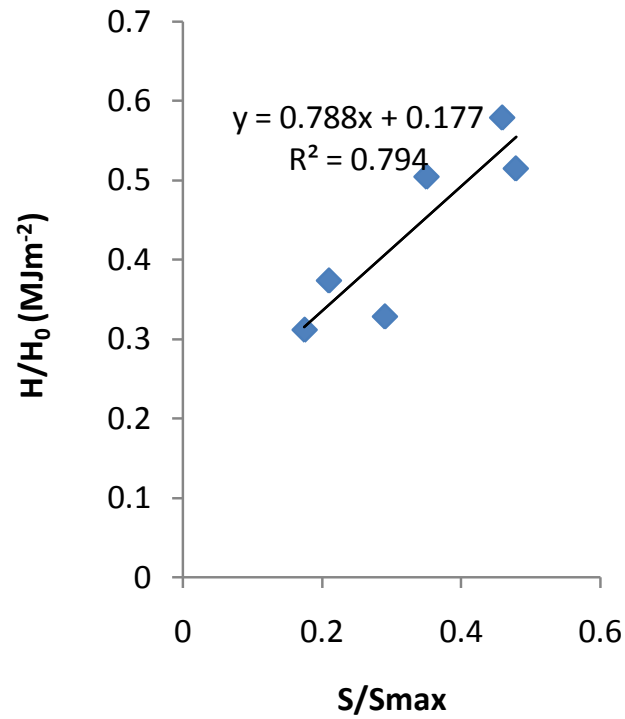


Figure 6. Graph of H/H_0 versus S/S_{max} for the rainy season (April – September).

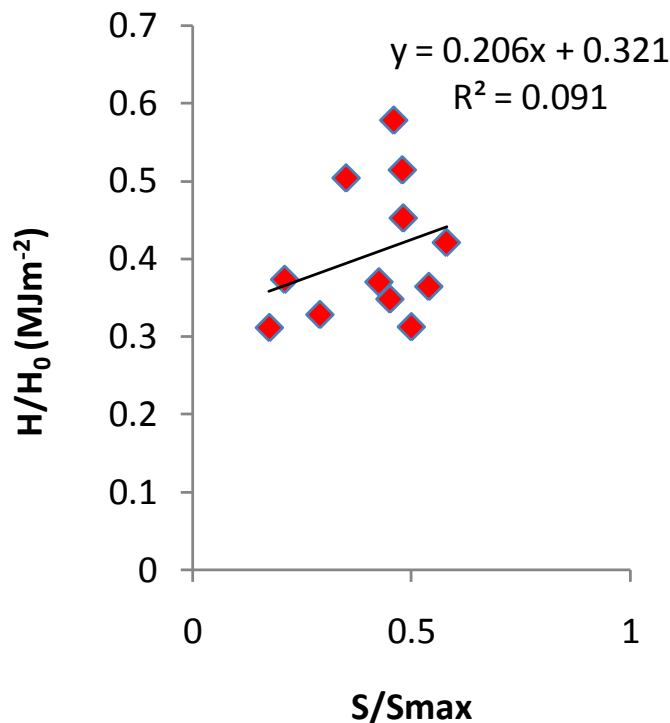


Figure 7. Graph of H/H_0 versus S/S_{max} over the year (January-December).

Table 3a. Statistical tools and regression constants: RMSE and MBE value for Ijebu-Ode.

Station	Location	RMSE	MBE
Ijebu Ode	6.81°N -3.92°E	0.052	6.24×10^{-7}

Table 3b. Correlation analysis for different period of the year.

Station	Period	Coefficient of determination	Correlation (R)	a	b
Ijebu Ode	Whole year	0.091	0.3017	0.321	0.206
	Rainy season	0.794	0.8913	0.177	0.788
	Dry season	0.061	0.2469	0.269	0.220

The ratio of the terrestrial solar radiation to the extra-terrestrial solar radiation (H/H_0), which is the clearness index K_T varies throughout the months of the year. It was observed that from Table 2 the highest values occurred in the month of May with the value 0.57843 while the least is found in the month of August with the value 0.31152 both in the monsoon period due to the fact that it is tropical region and radiation will be higher in sunny season than the rainy season. Based on the definition, sunshine duration is referred to as the cloudy nature of the atmosphere. It is clearly observed from

Table 2 that the least value occurred in the month of August with the value of 0.1748 which show that the sky will be prevailed by clouds. However, the highest value occurred in the month of February with the value of 0.5796 which from all indication show that the sky would be quite clear and very much less cloudy since it is around the harmattan period.

Comparing the clearness index with relative sunshine duration, It can be seen from Table 3a and b that the correlation co-efficient for the whole year is low having the correlation co-efficient as low as 0.30166 with the

degree of fitness of 9.1% which is also low. But taking cognisance of the monsoon period, there is vivid rise in correlation co-efficient having the value 0.8913 with the degree of fitness 79.4% which is high compared to the former. Hence, seasonal correlation co-efficient most especially that of rainy season is most appreciable.

Also from the statistical analysis there is remarkable agreement between the clearness index and relative sunshine duration due to the low value of RMSE of the value, **0.052**, which indicates that there is good correlation between the clearness index and relative sunshine duration. RMSE is always positive, however, a low or few values are ideal or desirable for tropical region (Iqbal, 1983; Halouani et al., 1993). The test of RMSE provides information on the short term performance of the studied model. On the other hand, the test on MBE provides information on the long term performance of the model. A positive MBE value gives the average amount of over-estimation in the calculated value. Hence, low MBE is appreciable (Almorox et al., 2005; Che et al., 2007).

Conclusion

The monthly average global solar radiation and sunshine duration for Ijebu - Ode has been used to determine the applicability of the Angstrom –type regression model for estimating the global irradiance from sunshine duration. The model developed has been found to be applicable in the seasonal period (rainy season) than the whole year for the station with $r = 0.5 - 0.9$.

Mainly, dry season at Ijebu - Ode consists of two main distinct periods:

- (i) Harmattan period: this is one of the seasons in Nigeria characterised by extreme dryness, dust and cold weather. It lowers humidity, dissipates cloud cover, prevents rainfall formation and creates big clouds of dust resulting in duststorm or sandstorm; it also limits visibility and blocks the sun for several days. This is usually observed between December and January. Wind from the Sahara desert blows over the area and its environ are is heavily overcast with dust for many days with hazy and cloudy free weather condition.
- (ii) The cloudy and dust free period: This is observed around November, February and March.

Carrying out the analysis based on the season, dry season led to the poor correlation coefficient (October-March) probably due to the large characteristic of the sky condition during the period.

The corresponding equation for the rainy season with respect to correlation coefficient is given as:

$$\frac{H}{H_0} = 0.177 + 0.788 \left(\frac{S}{S_{max}} \right); r = 89.13\%$$

The aforementioned model could be employed in the estimation of global radiation for location that lies within the rainforest climatic zone of Southern Nigeria. Hence, in this study, rainy season model was considered to be quite satisfactory.

Conflict of Interests

The authors have not declared any conflict of interests.

ACKNOWLEDGEMENT

The authors thank the Nigeria Meteorological Agency (NIMET) Oshodi, Lagos State for its support in carrying out this work.

REFERENCES

- Almorox J, Benito M, Hontoria C (2005). Estimation of monthly Angstrom – Prescott equation coefficients from measured daily data in Toledo, Spain. *Renew. Energy J.* 30:931-936.
- Angstrom AS (1924). Solar and terrestrial radiation. *Meteorol. Soc.* 50:121-126.
- Babatunde E (2005). Some solar radiation ratios and their interpretation with regards to radiation transfer in the atmosphere. *Niger. J. Pure Appl. Phys.* 4:41-45.
- Che H, Shi G, Zhang X, Zhao J, Li Y (2007). Analysis of sky condition using 40 years records of solar radiation data in china. *Theor. Appl. Climatol.* 89:83-94.
- Duffie JA, Beekman WA (1994). *Solar Engineering of Thermal Processes*, 2nd Edition. John Wiley, New York.
- Folayan CO (1988). Estimation on global solar radiation bound for some Nigeria Cities. *Niger. J. Sol. Energy* 3:3-10.
- Halouani M, Nguyen CT, Vo Ngoc D (1993). Calculation of monthly average global solar radiation on horizontal for station five using daily hour of bright sunshine. *Sol. Energy* 50:247-255.
- Iqbal M (1993). *An Introduction to solar radiation* Academic press. New York. pp. 59-67.
- Page JK (1964). The estimation of monthly mean values of daily total short wave radiation on vertical and inclined surfaces from sunshine records for latitudes 40°N-40°S. *Proc. UN Conference on New Sources Energy* 598(4):378-390.
- Rao CR, William A, Tae YL (1984). The diffuse component of the daily global solar radiation at Corvallis, Oregon. *Sol. Energy* 32(5):637-641.
- Reitveld MR (1983). A correlation for estimation of global solar radiation. *Sol. Energy* 31:45-51.
- Sodha MS, Bansal NK, Kumar KP, Mali AS (1986). *Solar Passive building: Science and design* Pearson Press. pp. 1-16.
- Stone RJ (1993). Improved statistical procedure for the valuation of solar radiation models. *Sol. Energy* 51(4):289-291.
- World Meteorological Organisation (1962). Commission for instrument and methods of observation. Abridge final report of the third session WMO-363, Geneva.

Full Length Research Paper

Analytical model of heavy-particle pollutant transport in estuary

M. Mubarak¹ and A. Sulaiman^{2*}

¹Department of Marine Science, Universitas Riau, Indonesia.

²Geostech Laboratory, Badan Pengkajian dan Penerapan Teknologi, Gd 820 Kawasan, Puspiptek Serpong, Tangerang Selatan, Indonesia.

Received 25 June, 2015; Accepted 17 December, 2015

The aspects of heavy-particle diffusion in the tropical estuary is investigated. The two dimensional advection-diffusion equations with tidal and settling velocity were solved with steady state approximation. An analytic solution was obtained in term of Cosines Integral function. The results showed that the profile of concentration follow a tidal cycle with the concentration decrease when the tidal speed is low and increase as the tidal speed is up. On the other hand, at the low speed of tidal current, the pollutants will likely to stay in place.

Key words: Diffusion, estuary, heavy-particle.

INTRODUCTION

Most coastal areas around the world are characterized by the presence of estuaries and embayment in which the water is predominantly driven by tides. The tide, especially tidal current is an important factor in dispersion processes of the passive scalar (pollutant) in the estuary. In general, ocean currents generated by tidal motion do not have a significant influence in the current circulation off the coast. In the area near the coast a tidal current has a significant effect even though we only discuss behavior to pollutants dispersion in the steady state condition. In the area near the coastline or estuary, the tidal current strengthened due to the shoaling effect. This flows generate the mixing processes and stratification in shallow waters which is closely related to the dispersion of pollutants. In short, the tide current is very important to support the pollutant dispersion in the estuary and the

shallow coast.

A shallow tidal coast in which the ocean dynamics were dominated by tide is one of the most complex coastal seas. For example, the tidal current can generate the high level turbidity (Hoitink, 2003). The asymmetry of tidal currents is also a very important factor in the transport and accumulation of sediments (Hoitink, 2003; Wolanski et al., 1996). The works show that asymmetry in the flow acceleration will increase the rate of suspended load transport for fine sediments. The observation indicates that tide-dominated estuaries usually characterized by a convergent shape.

The complex processes of transport of pollutants in coastal areas is not only determined by a tidal hydrodynamics, but also by the variable propensity of many such contaminants (Eric et al., 2013). The example

*Corresponding author. Email: albertus.sulaiman@bppt.go.id.

of this problem is that we are dealing with heavy-particle pollutants such as a heavy metal (Cd, Cu, Hg, Pb, Zn). The heavy metal measurement performed on the Scheldt River basin show that a longitudinally dissolved Cd and Cu has a convex shape instead Gaussian as most pollutants with fine particle (Gao et al., 2013). The studies suggest there are three things that need attention in the study of heavy metal dispersion. They are, inhomogeneity of point source for different metals, difficulty in quantifying diffusive input and complication of the biogeochemical behavior. Some effort to understand the process is done by using mathematical models such as 1D dispersion model, WASP water quality model, Environmental Fluid Dynamics Code (EFDC), SiAM-3D etc (Eric et al., 2013; De Smedt et al., 2006, Lu et al., 2014; Thouvenin et al., 2007).

In line with numerical model, the analytical model is also worth studying due to the simple nature. The advantage of an analytical model is simplicity so that the solution can be easily applied to field observations. The model usually only consider the importance or dominant factor in the phenomena such as estuaries dominated by dispersion, dominated by advection, or having dispersion and advection of similar magnitude (Fernando et al., 2012; Savenije 2005). For example the analytic solution of a simple depth-averaged 1D model has been used to investigate the sediments transport measurement with only consideration of the advection due to tidal motion, local resuspensions and deposition (Yu et al., 2012).

The paper investigates the analytical modeling of the heavy-metal dispersion in an estuary. In this proposed model, the heavy metal is considered as heavy-particles where its gravitational effect significant enough and this must be taken into account in the model. This effect will be accommodated by the settling velocity w_s . The settling velocity is the velocity at which pollutant falls through water and it is controlled by both the drag force and the gravitational force. The combined effect of gravitation and the tidal current is challenging to model in analytical ways. Although the analytic model can only be done in the simple case, it is still important because the physical interpretation is easy to be obtained. In this paper we will investigate how heavy-particle pollutants disperse in the estuaries by solving an advection-diffusion equation including settling velocity and tidal currents. The steady state of two dimensions of an advection-diffusion equation is solved by using the separation variable methods. The analytic solution with periodic advection velocity and polynomial diffusion coefficient were obtained in term of Cos Integral function.

The paper is organized as follows: First is a description of heavy-particle pollutant dispersion followed by that of the analytic solution based on the separation variable. The advection processes due to tidal dynamics were next derived; thereafter, the simulation result of pollutant dispersion due to variation of horizontal and vertical coefficient were presented respectively, followed by the

concluding remarks.

PROPOSED MODEL

Pollutant dispersal around the estuaries will depend on two factors, that is, advection processes due to hydrodynamics motion and diffusion factors due to turbulence motion. By assuming advection velocity flow faster than pollutant dispersion, pollutant dispersion can be viewed as a steady state. Therefore, the steady state of an advection-diffusion equation describing dispersion of heavy-particle in the estuary can be written as,

$$U \frac{\partial C}{\partial x} + w_s \frac{\partial C}{\partial z} = \frac{\partial}{\partial x} \left(\kappa_x \frac{\partial C}{\partial x} \right) + \frac{\partial}{\partial z} \left(\kappa_z \frac{\partial C}{\partial z} \right) \quad (1)$$

where K_x and K_z are diffusion coefficients in zonal and vertical direction respectively, U is the zonal velocity and w_s are the particle settling velocity. The settling velocity is the key factor to study the suspended load transport where the response of the sediment is characterized by H/w_s with H denoting the water depth. It is well known that increasing of flow rate can entrain the sediments near the bed and then moves vertically upward until a steady state is reached (Hoitink, 2003). Previous studies show that most of the solution to be found are for special cases of this equation (James, 2002; Stockie, 2012). The boundary value problem is depicted in Figure 1. In this paper a special case will be used to get an analytic solution. The boundary and initial condition for $C(x, z)$ are written as,

$$\begin{aligned} \left[w_s C - \kappa_z \frac{\partial C}{\partial z} \right]_{z=0.H} &= 0 \\ C(0, z) &= \frac{C_o}{U} \delta(z) \\ C(\infty, z) &= 0 \end{aligned} \quad (2)$$

For simplicity, first it was assumed that diffusion coefficients are constant, say K . It is not difficult to show that generalization can be inferred from the solution, if the diffusion coefficients are not constant. Further, let us assume that the depth of estuary is constant. This approximation is useful for the alluvial estuaries.

In the coastal ocean, there is a disparity between horizontal and vertical scales. It means that the horizontal and vertical diffusion are usually considered separately and have very different values (James, 2002). It can be inferred that, an assumption that the separation variable is a solution can be made. By using the approximation, suppose the solution has the form of,

$$C(x, z) = \phi(x)\psi(z) \quad (3)$$

we have,

$$U(x)\psi \frac{d\phi}{dx} + w_s \phi \frac{d\psi}{dz} = \psi \frac{d}{dx} \left(\kappa_x \frac{d\phi}{dx} \right) + \phi \frac{d}{dx} \left(\kappa_x \frac{d\psi}{dx} \right) \quad (4)$$

Multiplying by $1/(\phi\psi)$ yields,

$$\frac{1}{\phi} \left[U(x) \frac{d\phi}{dx} - \frac{d}{dx} \left(\kappa_x \frac{d\phi}{dx} \right) \right] + \frac{1}{\psi} \left[w_s \frac{d\psi}{dz} - \frac{d}{dx} \left(\kappa_x \frac{d\psi}{dx} \right) \right] = 0 \quad (5)$$

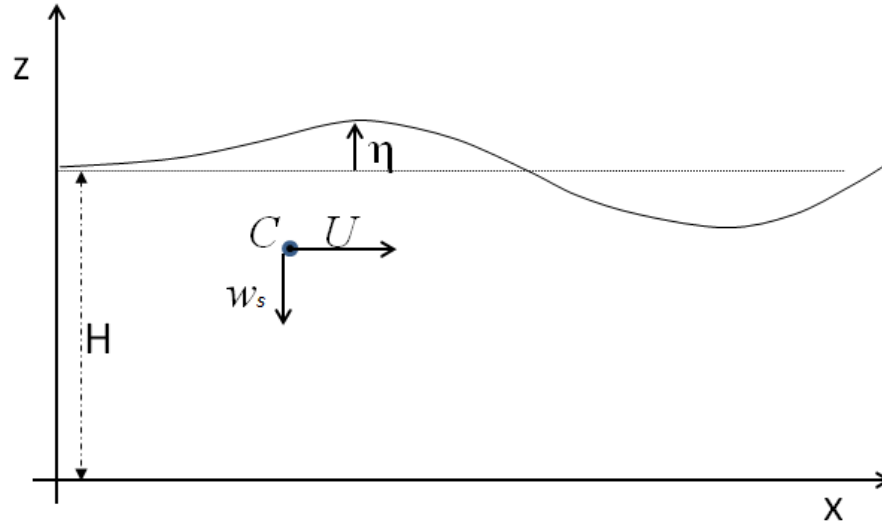


Figure 1. The boundary problem of heavy-particle dispersion in estuary. The horizontal axis is represented the distance from offshore to the river mouth.

The equation can be written in two ordinary differential equations as follow,

$$\begin{aligned}
 U(x) \frac{d\phi}{dx} - \frac{d}{dx} \left(\kappa_x \frac{d\phi}{dx} \right) &= m\phi \\
 w_s \frac{d\psi}{dz} - \frac{d}{dx} \left(\kappa_x \frac{d\psi}{dx} \right) &= -m\psi
 \end{aligned}
 \tag{6}$$

Next we solve the second equations with wrote back into,

$$\kappa_z(z) \frac{d^2\psi}{dz^2} + \left[\frac{d\kappa_z}{dz} - w_s \right] \frac{d\psi}{dz} = m\psi
 \tag{7}$$

In the first step, it must be shown that the differential equation is exact. The equation is exact if we choose $m = 0$. This means that the equation should be solved,

$$\kappa_z(z) \frac{d^2\psi}{dz^2} + \left[\frac{d\kappa_z}{dz} - w_s \right] \frac{d\psi}{dz} = 0
 \tag{8}$$

An exact linear second-order ordinary differential equation (ODE) can be solved by reduction to a linear first-order ODE (Kreyzig, 1993). This equation can be integrated if the dispersion coefficient is prescribed. For the most case in the estuary, the vertical motion is dominated by mixing processes due to the meeting of fresh water from a river and salts water from the off-shore. The mixing also caused by the breaking of internal waves due to shoaling effect when the wave propagates into the coastline. The physical mechanism of the processes is called the Kelvin-Helmholtz instability where the detail study is out of this paper (Smyth and Moum, 2012; Thorpe, 2007). The mixing experiment in the estuary has been done to get the vertical dispersion coefficient (Thorpe, 2007). The result shows that in the most case the vertical dispersion coefficient has the power series form or logarithms profile especially for close to the seabed. Following this result, it

was assumed that the vertical dispersion has the form of $K(z) = az^b$ with the solution being,

$$\psi = \psi_0 \int^z \exp \left[\frac{\xi^{1-2b} (ab\xi - 2w_s\xi^b)}{2a(b-1)} \right] d\xi
 \tag{9}$$

This is obtained by using DSolve Mathematica Package. Further, the equation for $\phi(x)$ should read,

$$\frac{d}{dx} \left(\kappa_x \frac{d\phi}{dx} \right) - U(x) \frac{d\phi}{dx} = 0
 \tag{10}$$

This is not an exact differential equation as such cannot be reduced to the first order differential equation. That equation can be written in the form of the following,

$$\kappa_x(x) \frac{d^2\phi}{dx^2} + \left(\frac{d\kappa_x}{dx} - U(x) \right) \frac{d\phi}{dx} = 0
 \tag{11}$$

There is no general solution of this equation that must take special form of $K_x(x)$ and $U(x)$. To the pollutant dispersion in an estuary, the dispersion coefficient generally can be approached by the form of a polynomial function which is $K_x(x) = px^q$ with p and q are constant. In the alluvial estuaries the longitudinal dispersion usually has the form of exponential (Vallino and Hopkinson, 1998). Interest in the dynamics of pollutants due to tidal current will result in the flow taking the form of function $U(x) = A_n \cos(n\pi x)$. The general solution is given by,

$$\begin{aligned}
 \phi(x) = \phi_0 \int \left[\exp \left[-\frac{A}{2p} \Gamma(1-q, -in\pi\zeta) \zeta^{1-q} - (in\pi\zeta)^{q-1} - \Gamma(1-q, in\pi\zeta) \zeta^{1-q} (in\pi\zeta)^{q-1} \right] \right. \\
 \left. - \Gamma(1-q, in\pi\zeta) \zeta^{1-q} (in\pi\zeta)^{q-1} - \exp(-q \ln \zeta) \right] d\zeta
 \end{aligned}
 \tag{12}$$

where $\Gamma(\zeta)$ is a Gamma function. For example in the case of $K_x(x) = px$ the solution is,

$$\phi(x) = \phi_0 \int_1^x \exp \left[-\frac{A}{p} Ci(n\pi\zeta) \right] \frac{d\zeta}{\zeta} \quad (13)$$

where $Ci(\zeta) = \gamma + \ln(\zeta) + \int_0^\zeta (\cos(\eta) - 1)/\eta d\eta$ is a special function called Cos-Integral and $\gamma = 0.5772156$ is Euler's constant. Now the complete solution is given by,

$$C(x, z) = \phi_0 \int_0^z \exp \left[\frac{\zeta^{1-2b} (ab\zeta - 2w_\zeta \zeta^b)}{2a(b-1)} \right] d\zeta \times \int_1^x \left[\exp \left(-\frac{A}{2p} \Gamma(1-q, -in\pi\zeta) \zeta^{1-q} (-in\pi\zeta)^{q-1} \right) - \exp(-q \ln \zeta) \right] d\zeta \quad (14)$$

with the boundary condition given by Equation 4.

ADVECTION PROCESSES BY TIDAL CURRENT

An equation of motion that describes the dynamics of tidal elevation and tidal current is the shallow waters equation. This research is only interested in the movement of the dynamics of the zonal direction that is dominant in the estuaries and near the coast, the dynamics of tidal elevation and current satisfy,

$$\frac{\partial U}{\partial t} + U \frac{\partial U}{\partial x} + g \frac{\partial \eta}{\partial x} = 0 \quad (15)$$

$$\frac{\partial \eta}{\partial t} + U \frac{\partial \eta}{\partial x} + (H + \eta) \frac{\partial U}{\partial x} = 0 \quad (16)$$

with η and U are long wave elevation and particle velocity respectively. H is the water depth. For the nonlinear term is not dominant, the perturbation methods can be applied. In this approximation, the tidal elevation η and velocity U were described as,

$$U(x, t) = \varepsilon U^{(1)} + \varepsilon^2 U^{(2)} + \dots, \quad (17)$$

$$\eta(x, t) = \varepsilon \eta^{(1)} + \varepsilon^2 \eta^{(2)} + \dots, \quad (18)$$

where $\varepsilon = H/L$ is a small parameter and L , the zonal length scale. Note that in shallow water approximation $H \ll L$ was used. The physical meaning is that the higher order has the small influence of the smaller order; in other words the higher order act as a correction of the lower order. Substituting Equations 17 and 18 into Equations 15 and 16 yields,

$$\varepsilon \frac{\partial U^{(1)}}{\partial t} + \varepsilon^2 \frac{\partial U^{(2)}}{\partial t} + \varepsilon^2 U^{(1)} \frac{\partial U^{(1)}}{\partial x} + \varepsilon g \frac{\partial \eta^{(1)}}{\partial x} + \varepsilon^2 g \frac{\partial \eta^{(2)}}{\partial x} + O(\varepsilon^3) = 0 \quad (19)$$

$$\varepsilon \frac{\partial \eta^{(1)}}{\partial t} + \varepsilon^2 \frac{\partial \eta^{(2)}}{\partial t} + \varepsilon^2 U^{(1)} \frac{\partial \eta^{(1)}}{\partial x} + \varepsilon H \frac{\partial U^{(1)}}{\partial x} + \varepsilon^2 H \left(\frac{\partial U^{(2)}}{\partial x} + \frac{\partial \eta^{(1)}}{\partial x} \frac{\partial U^{(1)}}{\partial x} \right) + O(\varepsilon^3) = 0 \quad (20)$$

The first orders have the solution,

$$\eta^{(1)} = \sum_{n=1}^7 A_n \cos(k_n x - \omega_n t) + B_n \sin(k_n x - \omega_n t) \quad (21)$$

Where O is the term of third order and higher, A_n and B_n are the wave amplitude respectively.

The dispersion relations must be fulfilled is,

$$c_n^2 = \frac{\omega_n^2}{k_n^2} \quad (22)$$

where $c = \sqrt{gH}$ is called linear tidal speed. Hence the tidal current was obtained by completing Equation 19 and 20 as follow,

$$U^{(1)} = -\sqrt{\frac{g}{H}} \sum_{n=1}^7 A_n \cos(k_n x - \omega_n t) + B_n \sin(k_n x - \omega_n t) \quad (23)$$

Further, the second order can be written as,

$$\frac{\partial^2 \eta^{(2)}}{\partial t^2} - c^2 \frac{\partial^2 \eta^{(2)}}{\partial x^2} = \frac{\partial}{\partial x} \left[U^{(1)} \frac{\partial U^{(1)}}{\partial x} \right] - \frac{\partial}{\partial t} \left(U^{(1)} \frac{\partial \eta^{(1)}}{\partial x} + gH \frac{\partial \eta^{(1)}}{\partial x} \frac{\partial U^{(1)}}{\partial x} \right) = 0 \quad (24)$$

This is the inhomogeneous wave equation where the solution is given by (Officer, 1978),

$$\eta^{(2)} = -\frac{3\omega_n}{4\sqrt{gH}^{\frac{3}{2}}} \sum_{n=1}^7 A_n^2 x \sin 2(k_n x - \omega_n t) + B_n^2 x \cos 2(k_n x - \omega_n t) \quad (25)$$

With the same manner, we obtain $U^{(2)}$ as,

$$U^{(2)} = -\frac{\sqrt{g}}{8H^{\frac{3}{2}}} \sum_{n=1}^7 A_n^2 \cos 2(k_n x - \omega_n t) + B_n^2 (k_n x - \omega_n t) - \frac{3\omega_n}{4\sqrt{gH}^{\frac{3}{2}}} \sum_{n=1}^7 A_n^2 x \sin 2(k_n x - \omega_n t) + B_n^2 x \cos 2(k_n x - \omega_n t) \quad (26)$$

This is a simple form of tidal elevation and current. In the simulation we use steady state tidal current as follow,

$$U = -\sqrt{\frac{g}{H}} \sum_{n=1}^7 A_n \cos(k_n x) + B_n \sin(k_n x) - \frac{\sqrt{g}}{8H^{\frac{3}{2}}} \sum_{n=1}^7 A_n^2 \cos 2(k_n x) + B_n^2 (k_n x) - \frac{3\omega_n}{4\sqrt{gH}^{\frac{3}{2}}} \sum_{n=1}^7 A_n^2 x \sin 2(k_n x) + B_n^2 x \cos 2(k_n x) \quad (27)$$

where this current can be obtained from a tidal measurement by applying the dispersion relation Equation 22.

RESULTS AND DISCUSSION

Here an example is given of a simulation model that was previously developed. The study areas to be learnt includes Tanjung Butung and Sumatra Indonesia. The estuaria is characterized by a micro tidal and gently sloping bathymetry. The time series of tidal elevation of this region is depicted in Figure 2. The first step in calculating pollutant dispersion, is to specify the tidal decomposition. Tidal phenomenon and the dynamics of sea associated with it in this region and the Indonesian water are very complex as the result of numerous strait, the complex topography as well as many small islands. Diurnal tides are unusually strong and are dominant along some coastlines (Ray et al., 2005; Gordon 2005; Wyrki, 1961). From the figure, it can be seen that the tidal type is the mixed predominantly diurnal form. The

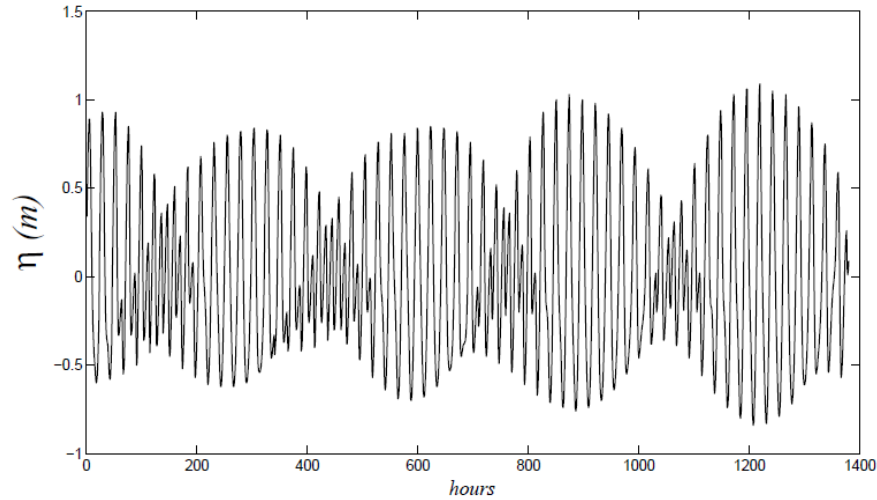


Figure 2. Tidal elevation from Tandjung Butung, Sumatra with time interval in hours and elevation in meters. This is a tidal prediction with time period March, 18 2015 to May, 18 2015

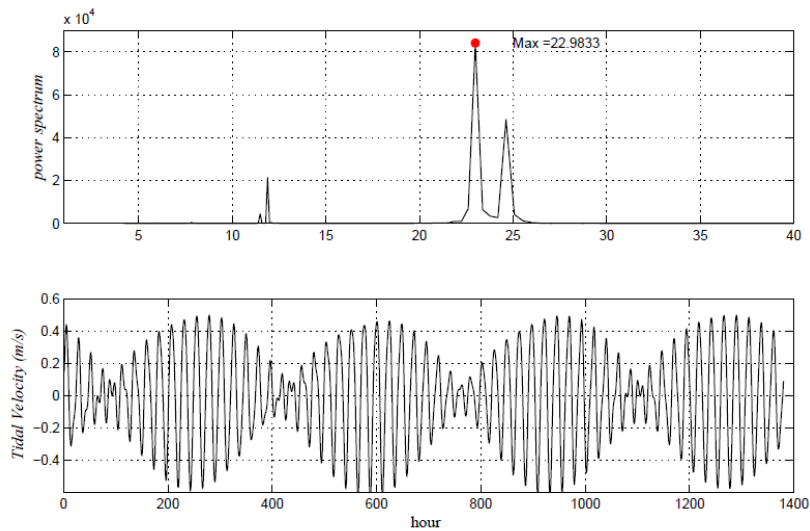


Figure 3. Power spectrum of tidal elevation and calculation of tidal current based on Equation 31.

tidal composition can be obtained by applying the Fourier transform respect to time series data. This is depicted in Figure 3. The tidal compositions from high to low energy are 22.98, 24.65, 11.78 and 11.50 h respectively. Substituting these periods into Equation 23 with $x = 0$ yields the tidal currents that is depicted in Figure 3. The advection velocity $U(x)$ is obtained by substitution of tidal frequencies into the dispersion relation (Equation 22). With this relation, the wavelengths associated with its periods are 324.98, 348.61, 166.59 and 162.63 m, respectively. The tidal elevation associated with the

wavelength is given by,

$$\eta(x) = 0.3 \cos\left(\frac{2\pi}{324.98} x\right) + 0.24 \cos\left(\frac{2\pi}{348.61} x\right) + 0.18 \cos\left(\frac{2\pi}{166.59} x\right) + 0.05 \cos\left(\frac{2\pi}{162.63} x\right) \quad (28)$$

where we used the cosines function. Then the tidal current then can be obtained by substituting into Equation 27. Finally, the tidal current decomposition into its component is depicted in Figure 4. The settling velocity 0.2 to 0.5 ms^{-1} was used.

The next step is determining the diffusion coefficient for

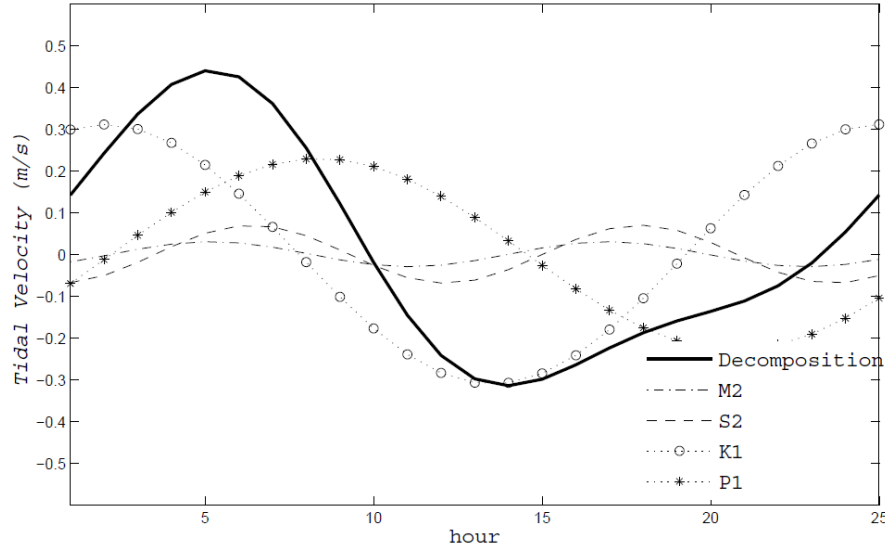


Figure 4. Tidal current decomposition for one tidal period.

both longitudinal ($K_x(x)$) and vertical one [$K_z(z)$]. Most researchers have used oceanographic parameters such as salinity and temperature distributions, dye release studies, and parameter estimation techniques to determine the longitudinal (or tidal) dispersion coefficient. They show that the estimated dispersion coefficient has a polynomial form and varies from 3.6 to $670 \text{ m}^2 \text{ s}^{-1}$. The dispersion coefficient is larger to the offshore. This result is also confirmed in the study of Christensen and Li (2014). Generally, the studies show that for oceans and lakes, the horizontal dispersion coefficient (Eddy diffusivities) κ_x and κ_y are in the range of 10^4 to $10^8 \text{ cm}^2 \text{ s}^{-1}$, and the vertical diffusivity κ_z is between 10^1 to $10^3 \text{ cm}^2 \text{ s}^{-1}$ (Christensen and Li, 2014). In this paper, many cases of the form of longitudinal and vertical dispersion coefficients have been described.

In the first case, the constant form of longitudinal dispersion coefficient namely $K_x(x) = p$ was chosen. The vertical dispersion coefficient is chosen in the form of $K_z = \kappa$. The solution is given by,

$$C(x, z) = \frac{\bar{C}_0 \kappa}{w_s} \exp \left[\frac{w_s}{\kappa} (z + H) \right] \sum_{n=1}^4 \int \exp \left[-\frac{A_n}{np\pi} \sin(n\pi\zeta) \right] d\zeta \quad (29)$$

By using the Taylor expansion of this yields,

$$C(x, z) = \frac{\bar{C}_0 \kappa}{w_s} \exp \left[\frac{w_s}{\kappa} (z + H) \right] \sum_{n=1}^4 \left[\frac{A_n}{pn^2\pi^2} + \left(1 - \frac{A_n}{2np\pi} \right) x - \frac{A_n}{pn^2\pi^2} \cos(n\pi x) + \frac{A_n}{4pn^2\pi^2} \sin(2n\pi x) \right] \quad (30)$$

The result is depicted in Figures 5 and 6. This is the pollutant concentration at the depth of 5 m at one tidal circle with the tidal wavelength about 350 m . Generally, the pattern of pollutant concentration is similar to the tidal current where the high concentration increases at high

tide and low tide. A variation of the concentration occurred at the time ahead of high tide. The concentration profile showed that in general, the concentration will decline with the depth. The varying concentration occurred in the surface until 20 m depth. This means that the upper part of estuaries is act as the net of pollutant traps.

The second case, we choose the linear function for the form of longitudinal dispersion coefficient namely $K_x(x) = px$. The vertical dispersion coefficient is chosen in the form of $K_z = \kappa$. The solution until second order accuracy is given by,

$$C(x, z) \approx \frac{\bar{C}_0 \kappa}{w_s} \exp \left[\frac{w_s}{\kappa} (H - z) \right] \ln(x) \sum_{n=1}^4 \left[1 - \frac{A_n}{p} Ci(n\pi x) \right] \quad (31)$$

The result is depicted in Figure 7. The figure showed the pollutant diffusion in a tidal circle at five meters in depth. The profile of concentration in general is still follow a tidal cycle. The concentration decrease when the tidal speed is low and increase as the tidal speed up. The pollutant diffusion in the water body is depicted in Figure 8. The figure showed that the concentration of going down to the depth with a pattern follow a tidal cycle. At the time of low tide phase, pollutants will likely to stay in place.

In the other case, it is assumed that there was a nonlinear form of the longitudinal dispersion and linear for the vertical dispersion coefficient, that is, $K(x) = px^2$ and $K(z) = \kappa z$. Then the solution until second order accuracy is given by,

$$C(x, z) \approx \frac{\bar{C}_0 \kappa}{w_s} z^x \sum_{n=1}^4 A_n \left[\frac{1}{2x^2} \cos(n\pi x) + \frac{n^2 \pi^2}{2} Ci(n\pi x) - \frac{n\pi}{2x} \sin(n\pi x) - n\pi Ci(n\pi x) + \frac{1}{x} Si(n\pi x) \right] \quad (32)$$

$$+ \frac{A_n}{4\pi^2 x^2} \cos(2n\pi x) - \frac{A_n}{4\pi^2 x^2} (1 + 4n^2 \pi^2 x^2 Ci(2n\pi x)) + \frac{A_n n}{2\pi x} \sin(2n\pi x)$$

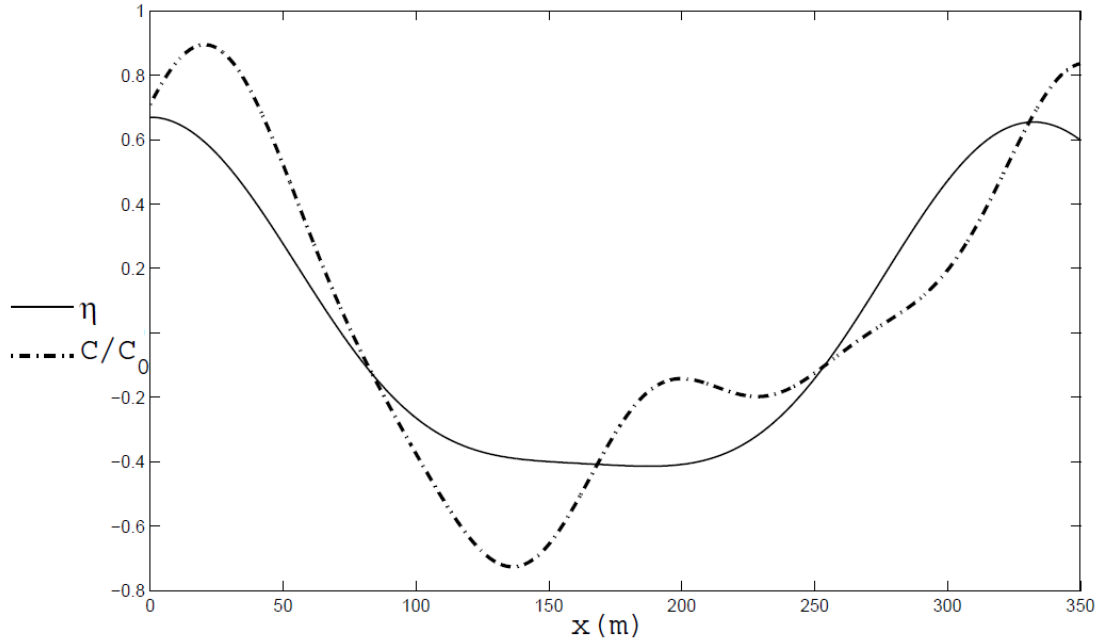


Figure 5. The normalized pollutant concentration (C/C_0) in one tidal circle at $z = -5$ m for the constant horizontal coefficient.

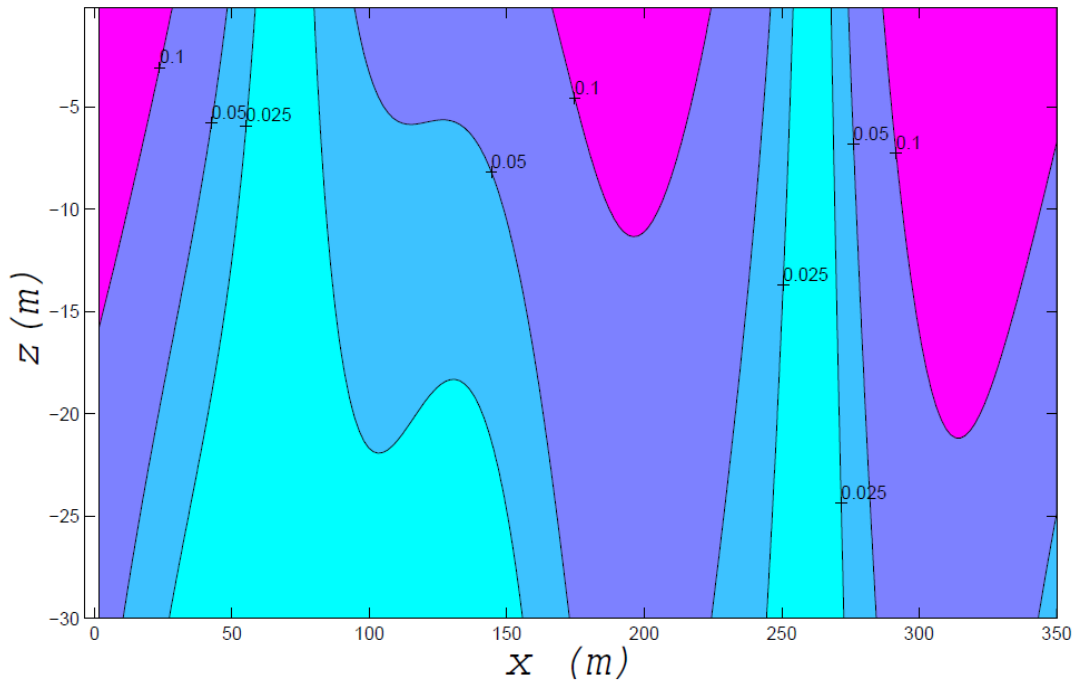


Figure 6. The two dimensional dispersion of normalized pollutant concentration (C/C_0) in one tidal circle with the horizontal dispersion coefficient is a constant.

where Si is the sinus integral function given by $Si(\zeta) = \int_0^\zeta \frac{\sin(\tau)}{\tau} d\tau$. The pollutant concentration at the depth of 5 m is depicted in Figures 9 and 10 for diffusion in water

body. Again, the profile of pollutant concentration have similar pattern with tidal circle. The concentration decreases when it is far from the source especially for

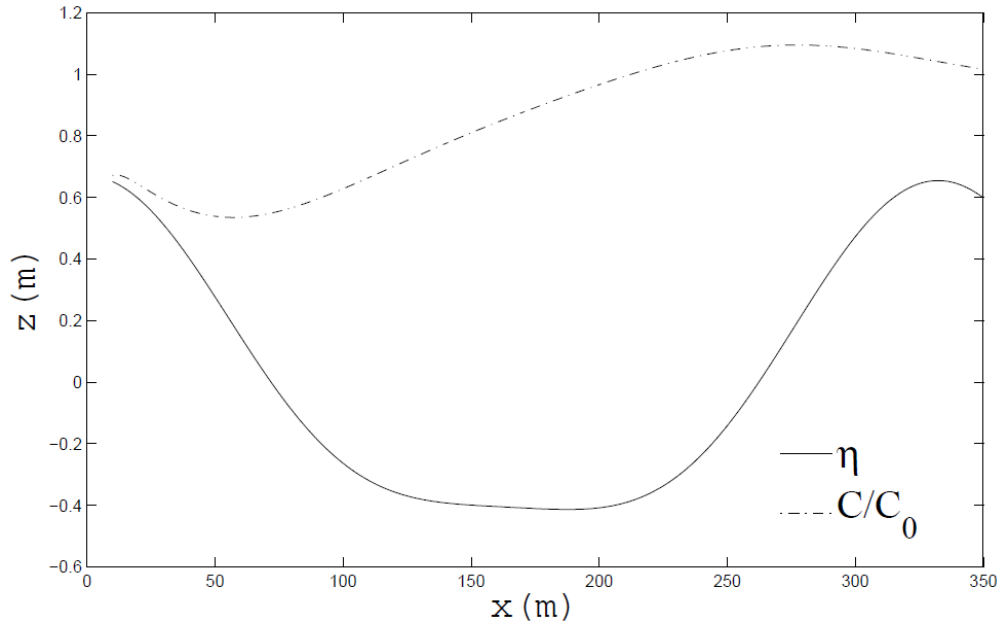


Figure 7. The normalized pollutant concentration (C/C_0) in one tidal circle at $z = -5\text{ m}$ with the linear horizontal coefficient.

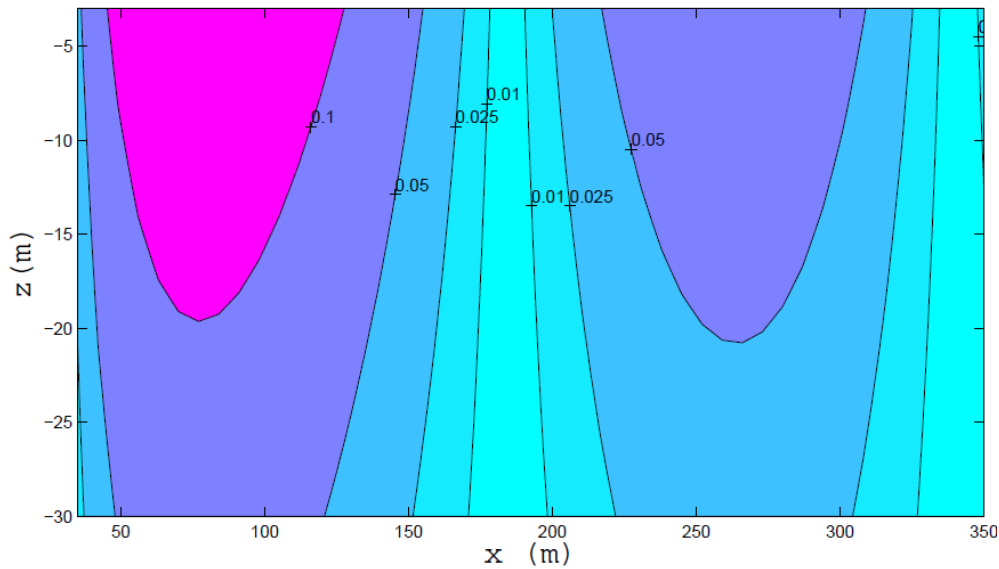


Figure 8. The two dimensional dispersion of normalized pollutant concentration (C/C_0) in one tidal circle with the linear horizontal dispersion coefficient.

linear and nonlinear diffusion coefficient.

Conclusion

An analytical model of heavy-metal dispersion induced tidal current has been investigated. By applying separation variable methods the analytic solution was

obtained. The explicit solutions can only be obtained by selecting particular form of the horizontal coefficients dispersion. In the case of dispersion coefficient, the linear and quadratic solution is given in the Cos Integral and Sin Integral function. This research studied the diffusion of pollutants in a tidal circle. The profile of concentration in general follows a tidal cycle with the concentration decrease when the tidal speed is low and increase as the

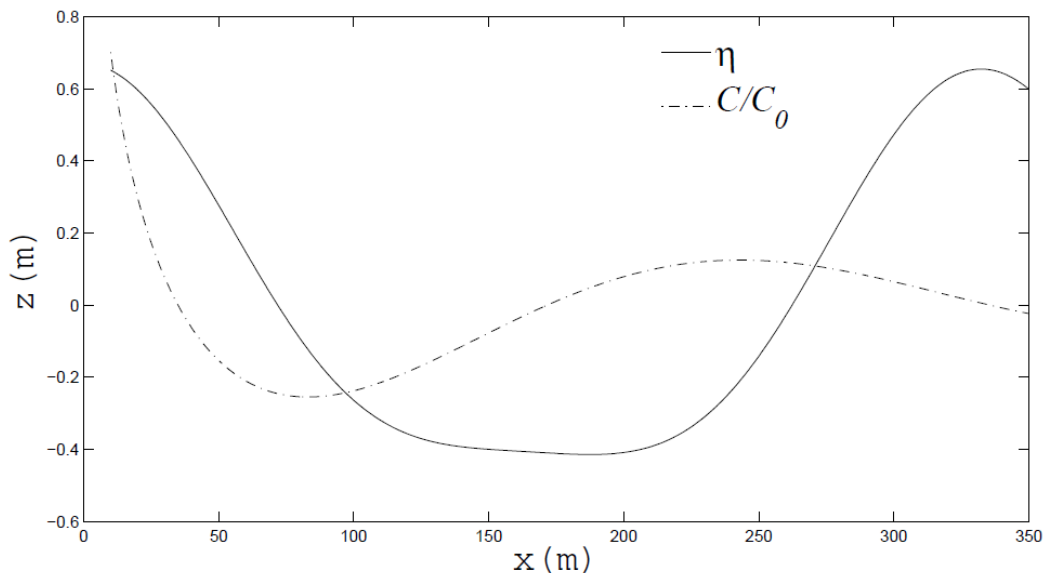


Figure 9. The normalized pollutant concentration (C/C_0) in one tidal circle at $z = -5\text{ m}$ for the nonlinear horizontal coefficient.

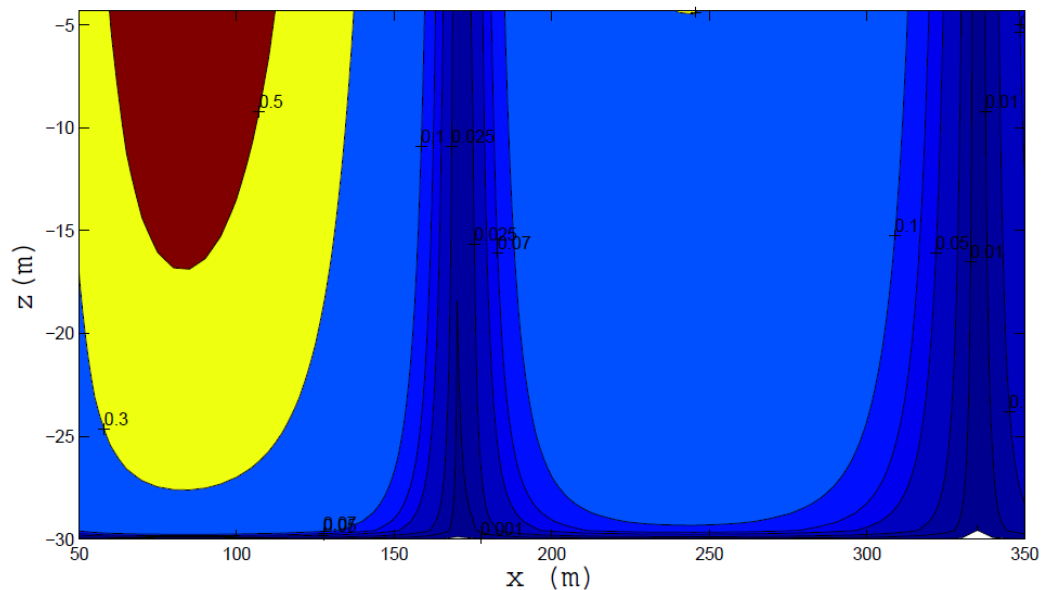


Figure 10. The two dimensional dispersion of normalized pollutant concentration (C/C_0) in one tidal circle with the nonlinear horizontal dispersion coefficient.

tidal speed up. All cases show that at the low speed of tidal current, the pollutants will likely stay in place. The expansion of the model is necessary for the case to be more realistically indispensable as taking into account the effects of the geometry of estuary. Previous studies show that the geometry is one of the most important parameters in the analytical estuary model (Tseng, 2002; Nguyen et al., 2012). On the other hand, the analytical

model of the pollutant transport due to the residual currents produced by mixing of fresh water and salt water is also interesting and this work is still in progress.

Conflict of Interests


The authors have not declared any conflict of interests.

ACKNOWLEDGEMENTS

The authors appreciate the hospitality from Laboratorium Geomatika Pusat Teknologi Inventarisasi Sumberdaya Alam BPPT during the work. This work is funded both by the Indonesia Ministry of Higher Education, Research and Technology and by Universitas Riau, Indonesia in fiscal year 2014.

REFERENCES

- Christensen EC, Li A (2014). *Physical and Chemical Processes in The Aquatic Environment*. John Wiley and Sons, New Jersey pp. 267-284.
- De Smedt F, Vuksanovic V, Van Meerbeeck S (2006). A Time dependent flow model for heavy metals in the Scheldt estuary. *Hydrobiologia* 366(1-3):143-155.
- Eric JM, Delhez A, Frank W (2013). Diagnosis of the transport of adsorbed material in the Scheldt estuary: A proof of concept. *J. Mar. Syst.* 128:17-26.
- Fernando PA, Ridd PV, Deleersnijder E, Prandle D (2012). Contaminant exchange rates in estuaries New formulae accounting for advection and dispersion. *Prog. Oceanog.* 113:14-27.
- Gao Y, de Brauwere A, Elskens M, Croes K, Baeyens W, Leermakers M (2013). Evolution of trace metal and organic pollutant concentrations in the Scheldt River Basin and the Coastal Zone over the last three decades. *J. Mar. Syst.* 128:52-61.
- Gordon AL (2005). The Indonesian Seas, *Oceanography and their throughflow*. *Oceanography* 18(4):448-449.
- Hoitink AJFH (2003). *Physics of Coral Reef System in a Shallow Tidal Embayment*. Netherlands Geographical Studies pp. 16-26.
- James ID (2002). Modelling pollution dispersion, the ecosystem and water quality in coastal waters: a review. *Env. Model. Soft.* 17:363-385.
- Kreuzig E (1993). *Advanced Engineering Mathematic*, 7 edition, John Wiley and Son. New York pp. 245-267.
- Lu S, Xia Z, Zheng J, Chen Y, Ni W (2014). Numerical simulation of heavy metal (Copper) in the Oujiang Estuary. *Proceedings of the Twenty-fourth International Ocean and Polar Engineering Conference*, Busan, Korea.
- Nguyen DH, Umeyama M, Shintani T (2012). Importance of geometric characteristics for salinity distribution in convergent estuaries. *J. Hydrol.* 113:448-449.
- Officer B (1978). *Physical Oceanography of Estuaries*. John Willey and Son. New York pp.316-325.
- Ray RD, Egberta GD, Erofeeva ST (2005). Tides in the Indonesian Seas. *Oceanography* 18(4):74-80.
- Savenije HG (2005). *Salinity and Tides in Allubial Estuaries*. Elsevier Amsterdam pp. 253-261.
- Smyth WD, Moum JN (2012). Ocean Mixing by Kelvin-Helmholtz Instability. *Oceanography* 25(2):140-152.
- Stockie JM (2012). The Mathematics of Atmospheric Dispersion Modeling. *SIAM* 18(4):74-80.
- Thorpe SA (2007). *An Introduction to Ocean Turbulence*, Cambridge University Press, Cambridge pp. 174-185.
- Thouvenin B, Gonzalez JL, Chiffolleau JF, Boutier B, Le Hir P (2007). Modelling Pb and Cd dynamics in the Seine estuary. *Hydrobiologia* 588(1):109-124.
- Tseng RS (2002). On the Dispersion and Diffusion Near Estuaries and Around Islands. *Est. Coast. Shelf Sci.* 54:89-100.
- Vallino JJ, Hopkinson CS Jr (1998). Estimation of Dispersion and Characteristic Mixing Times in Plum Island Sound Estuary. *Estuar. Coast. Shelf Sci.* 46:333-350.
- Wolanski E, Asaeda T, Tanaka A, Deleersnijder E (1996). Three dimensional Island wakes in The Field, laboratory experiments and numerical models. *Cont. Shelf. Res.* 16:1437-1452.
- Wyrki K (1961). *Physical Oceanography of the Southeast Asian Waters*. Naga Report pp. 89-97.
- Yu Q, Wang YP, Flemming B, Gao S (2012). Tide-induced suspended sediment transport: Depth-averaged concentrations and horizontal residual fluxes. *Cont. Shelf. Res.* 34:53-63.



International Journal of Physical Sciences

Related Journals Published by Academic Journals

- *African Journal of Pure and Applied Chemistry*
- *Journal of Internet and Information Systems*
- *Journal of Geology and Mining Research*
- *Journal of Oceanography and Marine Science*
- *Journal of Environmental Chemistry and Ecotoxicology*
- *Journal of Petroleum Technology and Alternative Fuels*

academicJournals